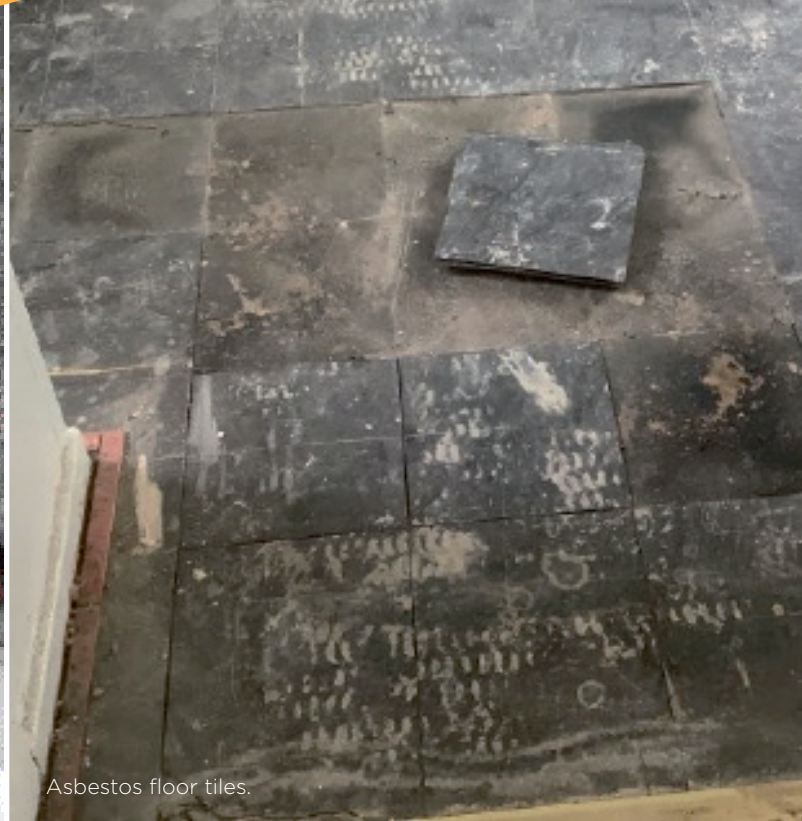




# A guide to **Asbestos**



Asbestos roof.



Asbestos floor tiles.

Asbestos is not dangerous if it's in good condition and left alone.

## **What is asbestos?**

Asbestos is a natural and fibrous material which is resistant to heat chemicals and its strong fibres have made it a popular material for building since the 1950s. It is often mixed with other materials which makes it hard to know if it is present in a home.

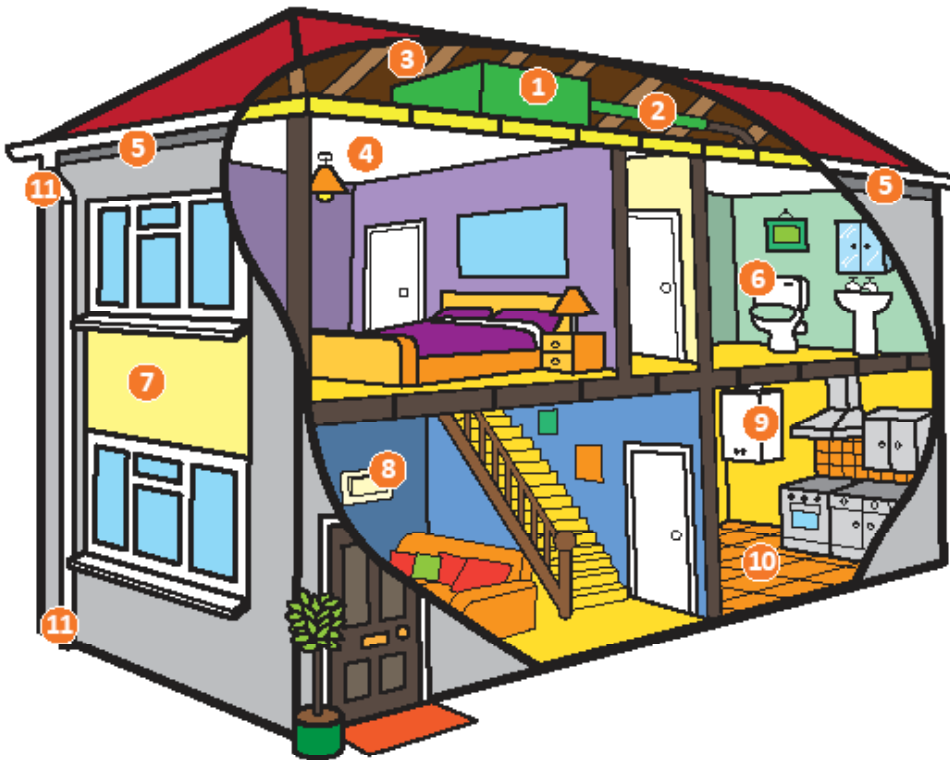
When it was identified as a health risk, asbestos was banned from use in construction in 1999 and strict regulations were introduced.

## **Why is asbestos a problem?**

Some people are alarmed when they discover asbestos is in a building but you should not panic as in most cases it is unlikely to be a danger to your health. If the asbestos is in good condition, is undamaged and hasn't been disturbed. It is normally safer to leave it alone.

It is only when asbestos is in poor condition or has been damaged or disturbed that the fibres could potentially be released and may be harmful to health.

## Where might asbestos be found in your home?



1. Cold Water Tanks
2. Pipe Lagging
3. Roof felt, sheets and tiles
4. Textured coatings (e.g. artex)
5. Fascia and soffit boards (e.g. roof overhangs)
6. Toilet cisterns
7. Wall panels
8. Fuseboards
9. Boiler/heater cupboard
10. Floor tiles
11. Rainwater guttering and downpipes

Asbestos may also be found in:

- Garage roof sheets
- Panels behind fires or heaters
- Panels on the back of doors
- Partition walls
- Service ducts
- Soil and vent pipes
- Window and door sealant

## Don't

Damage, remove or work with materials that you think might contain asbestos.

Doing so may release asbestos fibres which can be harmful to your health.

## Do

Leave asbestos materials where they are, if these items are accidentally damaged please contact us immediately.

## Advice

When in a good condition, asbestos materials are normally safer when left alone.

Further information about Asbestos can be found on the HSE website.

## What are we doing about asbestos?

We have a robust asbestos policy and management plan and we undertake asbestos surveys so that we know where asbestos is located. Depending on the risk identified we either manage it or remove it. Our employees receive training to deal with asbestos and we inform our customers about the risks. Only appropriately qualified and competent asbestos contractors are employed by us to carry out work involving asbestos.

## What should I do if I suspect there is damaged asbestos in my home?

If you think there are materials in your home that may contain asbestos and are damaged or in a poor condition, please contact us on **0333 200 7304**.

We will inspect your home and advise you what the next steps will be.

## Can I remove it myself?

Please contact us to discuss removal of asbestos prior to any works planned. To remove asbestos specific training is necessary and, in some cases, a specific licence that is issued by the HSE. All materials removed must be disposed of in accordance with strict regulations.